



LACROSSE FOOTWEAR
& APPAREL 2020



BSN SPORTS

3 MEN'S FOOTWEAR
 12 MEN'S APPAREL
 21 MEN'S UNIFORMS
 26 WOMEN'S FOOTWEAR
 31 WOMEN'S APPAREL
 36 WOMEN'S UNIFORMS

NEW

MEN'S BURNX2

CODES: BURNXM (MID), BURNXL (LOW)
 COLORS: WT/GR, WT/NV, WT/RD, BK/GR
 SIZES: 4 - 13, 14 (D AND 2E)
 AVAILABLE: 9/14/19 (LE AND INLINE)
 GREY PACK AVAILABLE 12/1/19
 \$60.50 / \$109.95

The Men's BurnX2 Mid/Low men's lacrosse cleat is built for speed. The fully knit upper features kinetic stitch only where needed for a snug, supportive fit that won't get in your way. Underfoot, the TPU plate provides the perfect combination of flexibility, stability and traction for - you guessed it - supporting your top speeds.

UPPER

- Knit upper for lightweight and breathable performance
- Kinetic Stitch for targeted stability only where needed
- Full collar construction for lock down fit
- Protective film on the toe for durability only where needed

SOLE

- Lightweight and flexible TPU outsole
- Underfoot spikes mimic track spike placement for straight ahead speed



W2

NEW

MEN'S RUSHv2

CODES: RUSH (MID), RUSHL (LOW)
 COLORS: BK, WT, GW
 SIZES: 6.5, 7 - 12, 13, 14 (D AND 2E)
 AVAILABLE: 10/1/19 (BLACK AND WHITE STYLES ONLY)
 GREY AVAILABLE 12/1/19
 \$38.50 / \$69.99

The New Balance men's lacrosse Rush v2 cleat is ideal for speed players seeking a refined silhouette and reliable support. A Low or Mid top collar and synthetic mesh upper delivers light, breathable support, while a redesigned plate helps stabilize your form during quick sprints.

UPPER

- Mid or Low collars that make it easy for you to choose your level of support
- Traditional tongue for easy entry and lock down fit
- Synthetic and mesh upper that delivers light, breathable support

PLATE

- New plate that provides upgraded underfoot traction and motion control



WB2



Grey White Mid styles available 12/1/19

FREEZE 2.0

CODES: FREEZWT2, FREEZPB2, FREEZRD2, FREEZBK2
 COLORS: WT2 (WH/GREY), BK2 (BLACK), PB2 (WH/NAVY), RD2 (WH/RED), GW2 (GREY)
 SIZES: 6.5 - 13, 14, 15 (D & 2E)
 AVAILABLE: 8/18/18

Designed for agility and traction, the NB FreezeLX 2.0 is made specifically for lacrosse. The new upper includes a 3D woven saddle combined with the plate to help support harder cuts to the cage and provide lateral traction to dodge defenders. All built on top of the same QuixRail TPU plate that took the sport by storm.

UPPER

- 3D woven saddle created with cutting data in mind that provides superior lateral support for demanding cuts
- External elastic heel band for lockdown support
- FreshFoam insert that provides additional heel cushioning and extra underfoot traction to help prevent foot slip inside the shoe
- Updated full booty construction for easier entry and a custom-like fit
- Film overlay on the tip for added durability

SOLE

- Using data to design, the NB FreezeLX features the game's first ever plate built for lacrosse
- QuixRail delivers lugs designed to mirror the angles in which lacrosse athletes cut throughout the game providing superior traction
- Dual-Density TPU (thermo polyurethane) plate provides the perfect combination of flexibility, stability and traction
- Strategically designed base lugs provide unparalleled underfoot traction while simultaneously delivering unmatched rotational release



WT2



NEW

JUNIOR RUSHv2

CODES: RUSHJ
 COLORS: WT, BK, GW
 SIZES: 1-6 (M, W)
 AVAILABLE: 10/1/19 (BLACK AND WHITE STYLES ONLY)
 12/1/19 - WHITE/GREY MID
 \$22.50 / \$39.99

UPPER

- Mid cut collar for ankle support
- Traditional tongue for easy entry and lock down fit
- Synthetic and mesh upper that delivers light, breathable support

SOLE

- Durable molded rubber outsole for quick cuts and motion control



BK2



BK2



PB2



RD2



GW2

FREEZE 2.0 BOX

CODES: FREEZBB2, FREEZBW2, FREEZBG2
 COLORS: B2 (BLACK/GUM), W2 (WHITE/GUM), G2 (GREY/GUM)
 SIZES: 6 - 13, 14, 15 (D & 2E)
 AVAILABLE: 6/9/18

Introducing the New Balance Freeze Box 2.0, the game's first lacrosse-specific box shoe. Bringing data-driven design to life, this shoe features a full-length Fresh Foam midsole to provide every athlete with unmatched support combined with optimal all game cushioning. Paired with full ground contact gum rubber outsole, this shoe is built to support the angles every lacrosse athlete cuts on indoor surfaces.

UPPER

- External elastic heel band for lockdown support
- Updated full Booty construction for easier entry and a custom fit
- Engineered Mesh upper for maximum breathability

SOLE

- Bringing data-driven design to life, this shoe features a full-length Fresh Foam midsole to provide every athlete with unmatched support combined with optimal all game cushioning
- One piece durable gum rubber outsole with zonal multi-directional traction to support the angles every box lacrosse player makes on polished concrete or turf
- Medial rubber wrap and TPU film on upper for added durability on toe drags



W2



G2



B2



FREEZE 2.0 TURF

CODES: FREEZJW2, FREEZJB2
 COLORS: W2 (WHGREY), B2 (BLACK/WH)
 SIZES: 6 - 13, 14, 15 (D & 2E)
 AVAILABLE: 10/1/18

Introducing the New Balance Freeze Turf 2.0, the game's first field turf lacrosse specific shoe. Bringing data to design to life, this shoe features a full length FreshFoam midsole to provide every athlete with unmatched support combined with optimal all game cushioning. This shoe is built to support the angles every lacrosse athlete cuts on field turf.

UPPER

- External elastic heel band for lockdown support
- Updated full booty construction for easier entry and a custom-like fit
- Engineered Mesh upper for superior breathability

SOLE

- Bringing data-driven design to life, this shoe features a full-length Fresh Foam midsole to provide every athlete with unmatched support combined with optimal all game cushioning
- One piece durable rubber outsole
- Multi-directional lugs of varying size to support the angles every lacrosse player makes on field turf without the pressure of cleats underfoot
- Medial rubber wrap and TPU film on upper for added durability on toe drags



W2



BK2



FREEZE 2.0 JR CLEAT

CODES: FREEZJW2, FREEZJB2
 COLORS: W2 (WH/BLACK), B2 (BLACK/WH), G2 (GREY)
 SIZES: 2 - 6 (M & W)
 AVAILABLE: 10/1/18

Introducing the New Balance Freeze 2.0 Junior, the game's ultimate lacrosse specific cleat. Bringing data to design to life, this cleat features a one of a kind plate built to support the angles every lacrosse athlete cuts. Combined with a mesh upper and elastic heel strap, this cleat allows for harder cuts.

UPPER

- Mesh upper that combines with the lacrosse specific plate to enable you to make hard cuts
- External elastic heel band for lockdown support
- Traditional tongue construction for easy entry
- TPU skin helps prevent upper wear and also provides additional stability

PLATE

- TPU (thermo polyurethane) plate provides the perfect combination of flexibility, stability and traction
- Strategically designed base lugs provide unparalleled underfoot traction while simultaneously delivering unmatched rotational freedom
- Edge lugs provide unmatched traction on every cut



W2



G2



B2



FRESH FOAM HUPO'O

SLIDE
 \$25.00 / \$49.99

Wrap your foot in a cloud of comfort with the Fresh Foam Hupo'o. This unique sports slide features a full length Fresh Foam midsole carrier for incredible comfort and strategically placed rubber pods for enhanced traction and durability. The contoured foot bed is extremely plush for immediate comfort. The upper features a molded foam strap that will cause one to ponder whether this sandal is more comfortable under the foot or on top of the foot.



New 1/1/20
SMFTEKM1 Munsell White/Thunder/Vision Blue
 Futures 9/28/20
 D 7-17*



New 1/1/20
SMFTEKF1 Neo Flame/Black/Moondust/Metallic Silver
 Futures 9/28/20
 D 7-17*



10/1/19
SMFTEKK1 Black/Orca
 Futures 11/28/21
 D 7-17*



10/1/19
SMFTEKG1 Castlerock/Magnet
 Futures 11/28/21
 D 7-17*

200

SLIDE
 \$15.00 / \$29.99

The New Balance 200 slide will be your new must-have locker room companion. With a convenient slip-on design and a supple top bed foam for underfoot cushioning, you can recover in plush comfort after your next training session.



New 1/1/20
SMF200MB Neo Mint/Black/Vision Blue
 Futures 9/28/20
 D 5-17*
 4E 7-15*



New 1/1/20
SMF200FB Neo Flame/Black/Munsell White
 Futures 9/28/20
 D 5-17*
 4E 7-15*



New 1/1/20
SMF200CA Camo/Camo
 Futures 3/31/21
 D 5-17*
 4E 7-15*



New 1/1/20
SMF200CP Black/Camo
 Futures 9/28/20
 D 5-17*
 4E 7-15*



New 1/1/20
SMF200BY Black/Munsell White/Sulphur Yellow
 Futures 9/28/20
 D 5-17*
 4E 7-15*



10/1/19
SMF200K1 Black/Black
 Futures 9/30/21
 D 5-17*
 4E 7-15*



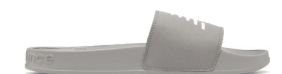
10/1/19
SMF200W1 White/White
 Futures 9/30/21
 D 5-17*
 4E 7-15*



10/1/19
SMF200R1 Red/Red
 Futures 9/30/21
 D 5-17*
 4E 7-15*



10/1/19
SMF200N1 Navy/Navy
 Futures 9/30/21
 D 5-17*
 4E 7-15*



10/1/19
SMF200G1 Grey/Grey
 Futures 9/30/21
 D 5-17*
 4E 7-15*



10/1/19
SMF200F1 White/Black
 Futures 9/30/21
 D 5-17*
 4E 7-15*



10/1/19
SMF200B1 Black/White
 Futures 9/30/21
 D 5-17*
 4E 7-15*

100

SLIDE
\$10.99 / \$21.99

The New Balance 100 sports slide has a plush one-piece EVA construction, making it the perfect accessory for pre- or post-game locker room relaxation. With a convenient slip-on design, it offers super soft comfort that you won't want to live without.



10/1/19
SUF100TN Navy/Navy
Futures 12/28/21
D 5-17*
4E 6-17*



10/1/19
SUF100TR Team Red/Red
Futures 12/28/21
D 5-17*
4E 6-17*



10/1/19
SUF100TG Grey/Grey
Futures 12/28/21
D 5-17*
4E 6-17*



10/1/19
SUF100TB Team Royal/Royal
Futures 12/28/21
D 5-17*
4E 6-17*



10/1/19
SUF100BK Black/Black
Futures 12/28/21
D 5-17*
4E 6-17*



10/1/19
SUF100TW Team White/White
Futures 12/28/21
D 5-17*
4E 6-17*

200 ADJUSTABLE

SLIDE
\$17.50 / \$34.99

The New Balance 200 adjustable sandal will be your new must-have locker room companion. With a convenient slip-on design and a supple top bed foam for underfoot cushioning, you can recover in plush comfort after your next training session. Plus, this sandal has an adjustable hook and loop strap to achieve a comfortable fit.



10/1/19
SMA200B1 Black/White
Futures 9/30/21
D 5-17*
4E 7-15*

FUELCELL PROPEL

ROAD RUNNING
\$60.50 / \$109.95

Are you ready for faster runs? The FuelCell Propel from New Balance is built for a speedy ride, our high rebound FuelCell formulation is new and improved, delivering a unique underfoot liveliness and springy responsiveness needed to help you beat your personal best. Designed with a comfortable trace fiber upper for zonal function support and a lightweight solid rubber and NDurance outsole, this fast and fashionable runner is fit for wherever your route takes you.



New 8/1/19
MFCPRLF1 Summer Fog/Black/Bayside
Futures 11/28/19
D/2E 7-12, 13-15*



New 8/1/19
MFCPRLB1 Lead/Black/White
Futures 11/28/19
D/2E 7-12, 13-15*

FRESH FOAM ROAV KNIT

ROAD RUNNING
\$44.00 / \$79.95

The Fresh Foam Roav Knit from New Balance has an Ultra Heel construction that adapts to your foot, providing a seamless feel and a modern aesthetic. This men's sneaker features Fresh Foam midsole delivers a comfortable and unmatched ride. Plus, a knit upper with suede overlays adds a touch of style.



New 7/1/19
MROAVKG Gunmetal/Summer Fog
Replenishment 3/31/20
D/2E 7-12, 13-18*



New 7/1/19
MROAVKB Black/Summer Fog
Replenishment 3/31/20
D/2E 7-12, 13-18*

MINIMUS PREVAIL

CONDITIONING
\$66.00 / \$119.95

The Minimus Prevail cross training shoe for men is designed to help bring strength, style and stability to your workout. Its engineered knit upper is infused with TPU fibers that help offer support as you lift weights and train with underfoot support and a good ground feel.



New 7/1/19
MXMPLB1 Black/Magnet/Metallic Silver
Futures 4/28/20
D/2E 7-13, 14-16*



New 7/1/19
MXMPLW1 White/Black/Energy Red
Futures 11/28/19
D/2E 7-13, 14-16*

SS TECH TEE

MENS: TMMT500 (XS - 3XL)
 YOUTH: TMYT500 (S - XL)
 COLORS: TBK, WT, TRY, TNV, TMO, TRE, TDG, DH, CB, ATG, TM

Featuring a lightweight and comfortable sweat-wicking fabric with a soft feel, our Tech Tee delivers an athletic fit to help give you maximum movement and breathability. Also has an antimicrobial treatment to resist odors so you can wear with confidence. Our Long Sleeve Tech Tee is the perfect all-purpose layer, ready for activity or just cold-chillin'.

- Material: 100% polyester
- Athletic fit
- NB heatseal logo at top of right shoulder



TENACITY SHORT SLEEVE

MENS: MT81095 (S - 2XL)
 COLORS: HC, AG

The Tenacity Short Sleeve is designed for those ready to change the game. Take the field - or road, or gym - with this raglan-sleeved, soft-fabric top

- Material: 100% polyester



LS TECH TEE

MENS: TMMT501 (XS - 3XL)
 COLORS: DH, TBK, TNV, WT

Featuring a lightweight and comfortable sweat-wicking fabric with a soft feel, our Tech Tee delivers an athletic fit to help give you maximum movement and breathability. Also has an antimicrobial treatment to resist odors so you can wear with confidence. Our Long Sleeve Tech Tee is the perfect all-purpose layer, ready for activity or just cold-chillin'.

- Material: 100% polyester
- Athletic fit
- NB heatseal logo at top of right shoulder



TEAM RALLY POLO

MENS: TMMT715 (S - 2XL)
 COLORS: TBK, WT, TRY, TNV, TRE, LG

This lightweight polo is built for performance with a fast wicking poly/mesh body and antimicrobial treatment to resist odors. The relaxed fit makes this a great option for coaches and team game day attire.

- Material: 100% polyester



HEATHERTECH T

MENS: MT73080 (S - 2XL)
 COLORS: WT, BKH, AG, PGM, TRY, REP, CAD

Bridge the gap between function and style with the men's Short Sleeve Heathertech T. Smooth, moisture-wicking fabric with superior softness has the performance features you need and a modern look. Plus, a subtle shark reflective logo helps up your visibility no matter your route.

- Material: 60% Cotton, 40% Polyester
- Athletic fit



LIGHTWEIGHT SOLID HALF ZIP

MENS: TMMT710 (S - 2XL)
 YOUTH: TMYT710 (S - XL)
 COLORS: TBK, MHG, TRY, TNV

Stretchy brushed-back fleece and an athletic cut help you have move freely in all conditions. This half zip also features a front pouch pocket.

- Material: 88% Polyester 12% Spandex



COREFLEECE CREW

MENS: MT83010 (S - 2XL)
COLORS: BK

An extension of the Core Fleece program, the Embossed Core Fleece crew brings a fashion element and freshness to a wardrobe staple. As a takedown of the NB HEATLoft crew, this sweatshirt can easily take you from class to practice

- Material: 100% Polyester



BK

SIDELINE JACKET

MENS: TMMJ718 (XS - 3XL)
COLORS: TBK, ALY

- Material: 100% Polyester
- Features: Hip length for warmth.
- Adjustable Cuffs.
- Zippered hand pockets.
- Internal Media Pocket.
- NB Heat technology.



ALY

TBK

WINDCHEATER JACKET

MENS: MJ71042 (S - 2XL)
COLORS: BK

If nasty weather strikes, you'll still be able to push yourself faster with the men's Windcheater Jacket. Made from our new technical lightweight fabric, it helps keep the wind out without weighing you down. Plus, reflective accents on the front and back add flexibility to your fitness schedule by helping to up your visibility on nighttime runs.

- Material: 100% Polyester



BK

RAIN JACKET

MENS: TMMJ721 (XS - 3XL)
COLORS: TBK

- Material: 100% Polyester
- Features: 100% Waterproof Shell.
- Heat sealed seams.
- Zippered hand pockets.
- Adjustable hood.
- Adjustable Cuff straps.
- INTRO 7/1/19



TBK

TENACITY PUFFER JACKET

MENS: MJ83059 (S - 2XL)
COLORS: LCL

Keep warm and keep the elements out with the athleisure-inspired Tenacity Puffer for men. Streamlined for your day-to-day lifestyle, the quilted, reliably insulated design features a wind- and water-resistant coating to help you stay comfortable whether you're warming up, heading out or hanging on the sidelines.

- Material: 100% Polyester



LCL

NB SWEATSHIRT

MENS: TMMT502 (S - 2XL)
YOUTH: TMYT502 (S - XL)
COLORS: BKH, ALY, TRY, TRE, TNV

Hit the field in the early morning with the warmth of premium brushed interior fleece, kangaroo hand pocket and three-piece hood construction of the NB Sweatshirt.

- Material: 60% Cotton 40% Polyester



BKH

ALY

TRY

TRE

TNV

PERF TECH HOODIE

MENS: TMMT719 (S - 2XL)
 COLORS: TBK, TRY, TNV, GNM

- Material: 100% Polyester
- Features: Front Pouch Pocket, and Adjustable hood.
- INTRO 7/1/19



TBK TRY TNV GNM

TECH SHORT

MENS: TMMS555 (S - 2XL)
 YOUTH: TMYS555 (S - XL)
 COLORS: TBK, TRY, TNV, TMO, TRE, TDG, DH, CB

The Tech Short is the perfect all-purpose active training short. Made from 90% poly, 10% spandex, our short is lightweight and comfortable with breathable, sweat-wicking fabric. Also features side seam pockets, which come in handy for holding essentials like keys or your phone.

- Material: 90% Polyester 10 % Spandex



TBK TRY TNV TMO TRE TDG DH CB

COREFLEECE HOODIE

MENS: MJ81005 (S - 2XL)
 COLORS: BK, GNM

The New Balance CoreFleece FZ Hoodie sports a soft polyester fleece build. It features an athletic fit, and a hood to keep you comfortable.

- Material: 100% Polyester



GNM BK

TENACITY WOVEN SHORT

MENS: MS83097 (S - 2XL)
 COLORS: BK, GNM

Get game day ready in the Tenacity Woven Short. Created with comfort, breathability, and enhanced mobility in mind, this short will keep you focused on your training, on the pitch, the field, or in the gym.

- Material: 90% Polyester 10 % Spandex



GNM BK

KNIT TRAVEL JACKET

MENS: KMJ9006 (S - 2XL)
 YOUTH: KYJ9006 (S - XL)
 COLORS: TBK, GRY, TNV

Features: NB Dry fabric technology. Zippered hand pockets. Scuba Hood. Brushed Back Fleece.

- Material: 86% Polyester, 14% Cotton



TBK GRY TNV

NB SWEATPANT

MENS: TMMP502 (S - 2XL)
 YOUTH: TMYP502 (S - XL)
 COLORS: BKH, ALY, TRY, TRE, TNV

Warm up or just chill out in the NB Sweatpant. Made with premium fleece, it's a comfortable choice when your training takes you outside during the cooler months. Available in a variety of team colors, the open bottom features elastic and a toggle so you can cinch it closed if you want. Wear it when you're gearing up to play, or just catching some rest in between games. Either way, it's a comfortable pant you'll want to stay in all season"

- Material: 60% Cotton 40% Polyester



BKH ALY TRY TRE TNV

COREFLEECE JOGGER

MENS: MP73011 (S - 2XL)
 COLORS: BK, GNM

Your game might not need to change, but your go-to gear could use an upgrade. Our NB Corefleece Jogger offers superior stretch and comfort functionality whether you're warming up or chilling out. It's cut from soft moisture-wicking fabric with a drawstring closure for a secure fit. Complete with reflective logo details and cuffed hems, this go-to pant has it all.

- Material: 100% Polyester



CHALLENGE 3/4 TIGHT

MENS: MP73029 (S - 2XL)
 COLORS: BK, WT

Comfort fit meets strategic, breathable mesh panels in our Challenge Base Layer Tight. A soft elastic waistband and just-right 3/4 length round out this performance layering piece.

- Material: 88% Polyester 12% Spandex



KNIT TRAVEL PANT

MENS: KMP9006 (S - 2XL)
 YOUTH: KYP9006 (S - XL)
 COLORS: TBK, GRY, TNV

- Material: 86% Polyester, 14% Cotton
- Features: Brushed Back Fleece for comfort.
- Side seam pockets.
- Leg zippers. Gripper
- Tape waistband.
- NB Dry technology.



NB CREW FLEECE

MENS: TMMT718 (S - 3XL)
 COLORS: BKH, MGH

- Material: 60% Cotton, 40% Polyester
- Features: Knit ribs and cuff details.
- Cotton Poly Blend fabric for comfort.
- NB embroidered logo.
- Classic styling.
- INTRO 7/1/19



PERFORMANCE TECH TIGHT

MENS: TMMP701 (S - 2XL)
 COLORS: BK, WT

Essential to every athlete is our Challenge Tight, a men's fitted pant with smart NB Dry and NB Fresh technology to keep you feeling dry, cool and comfortable. Mesh paneling ventilates hot zones while flatlock seams helps reduce chafing so you can work as hard as you want with confidence.

- Material: 88% Polyester 12% Spandex



NB FLEECE JOGGER

MENS: TMMP718 (S - 3XL)
 COLORS: BKH, MGH

- Material: 60% Cotton, 40% Polyester
- Features: Knit rib cuffs.
- Side seam pockets.
- Drawcord at waist.
- Classic styling.
- INTRO 7/1/19



REZIST 2.0 JACKET

MENS: TMMJ722 (XS - 3XL)
 YOUTH: TMYJ722 (S - XL)
 COLORS: TBK, GNM, TNV

- Material: 100% Polyester
- *100 polyester woven shell
- 100% polyester brushed mesh lining
- Vented back panel
- Zippered hand pockets
- Internal media pocket
- Adjustable cuffs
- Internal center front storm flap
- INTRO 7/1/19



TBK GNM TNV

CLUB REVERSIBLE JERSEY

MEN: DMT011 (S/M, L/XL, 2X/3X)
 YOUTH: DBT011 (S/M - L/XL)
 COLORS: MULTI

- Material: 100% Polyester
- Features include: Fully Sublimated customization.
- Shoulder seams rolled to back to eliminate distraction.
- Dual Ply Construction.
- Fully reversible.



REZIST 2.0 PANT

MENS: TMMP722 (XS - 3XL)
 YOUTH: TMY722 (S - XL)
 COLORS: TBK, GNM, TNV

- Material: 100% Polyester
- 100 polyester woven shell
- 100% polyester brushed mesh lining
- Vented back panel
- Zippered hand pockets
- Internal media pocket
- Adjustable cuffs
- Internal center front storm flap
- INTRO 7/1/19



TBK GNM TNV

CLUB SHORT 9"

MEN: DMS003 (S - 3X)
 COLORS: MULTI

CLUB SHORT 7"

MEN: DMS004 (S - 3X)
 YOUTH: DBS004 (XS - XL)
 COLORS: MULTI

- Material: 100% Polyester
- Features include: Fully Sublimated customization.
- Interior Drawstring.
- On seam Pockets.
- Encasted Elastic.



FREEZE JERSEY

MEN: DMT001 (S - 3X)
 YOUTH: DBT001 (XS - XL)
 COLORS: MULTI

- Material: 100% Polyester
- Features include: Fully Sublimated customization.
- Raglan Sleeve for better movement.
- Vented Mesh Insert Panels.
- Pindot Material.
- No side seams.

ALSO AVAILABLE IN TWILL:
 MEN'S TWILL STYLE # DMT006
 BOY'S TWILL STYLE # DBT006



CAGE JERSEY

MEN: DMT005 (S - 3X)
 YOUTH: DBT005 (XS - XL)
 COLORS: MULTI

- Material: 100% Polyester
- Features include: Fully Sublimated customization.
- Traditional Set in Sleeves.
- Pindot material

ALSO AVAILABLE IN TWILL
 MEN'S TWILL STYLE # DMT007
 BOY'S TWILL STYLE # DBT007



FREEZE SHORT 9"

MEN: DMS001 (S - 3X)
 COLORS: MULTI

FREEZE SHORT 7"

MEN: DMS002 - MEN (S - 3X)
 YOUTH: DBS002 (XS - XL)
 COLORS: MULTI

- Material: 100% Polyester
- Features include: Fully Sublimated customization.
- Interior Drawcord.
- Encased Elastic.
- Pindot Material.
- Vented Mesh Insert Panels.



CAGE SHORT 9"

MEN: DMS005 (S - 3X)
 COLORS: MULTI

CAGE SHORT 7"

MEN: DMS006 (S - 3X)
 YOUTH: DBS006 (XS - XL)
 COLORS: MULTI

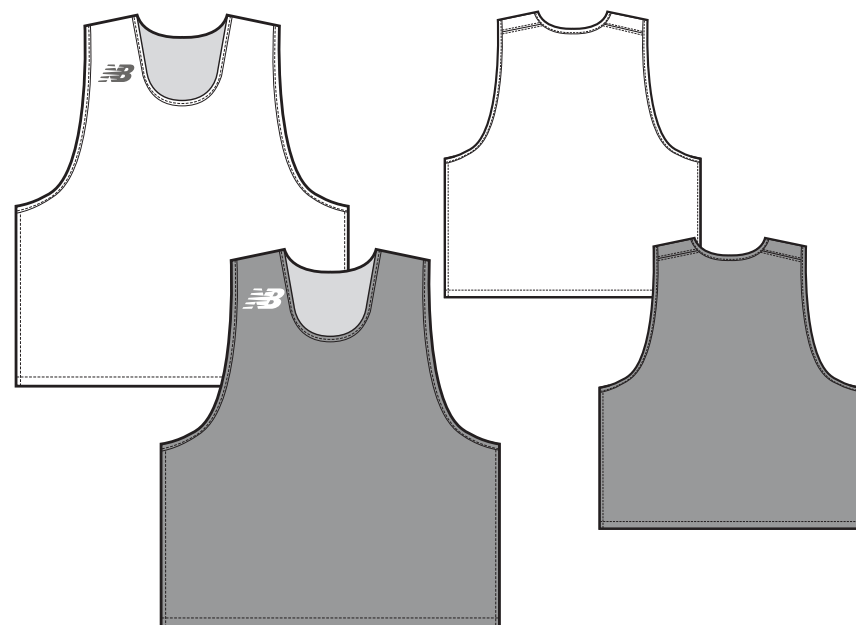
- Material: 100% Polyester
- Features include: Fully Sublimated customization.
- Interior Drawcord.
- Encased Elastic.
- Pindot Material.



SINGLE PLY JERSEY

MEN: DMT018 (S/M, L/XL, 2X/3X)
 YOUTH: DBT002 (S/M, L/XL)
 COLORS: MULTI

- Material: 100% Polyester
- Features include: Fully Sublimated customization.
- Shoulder seams rolled to back to eliminate distraction.
- Single Ply Construction.
- Fully reversible.
- INTRO 4/1/19

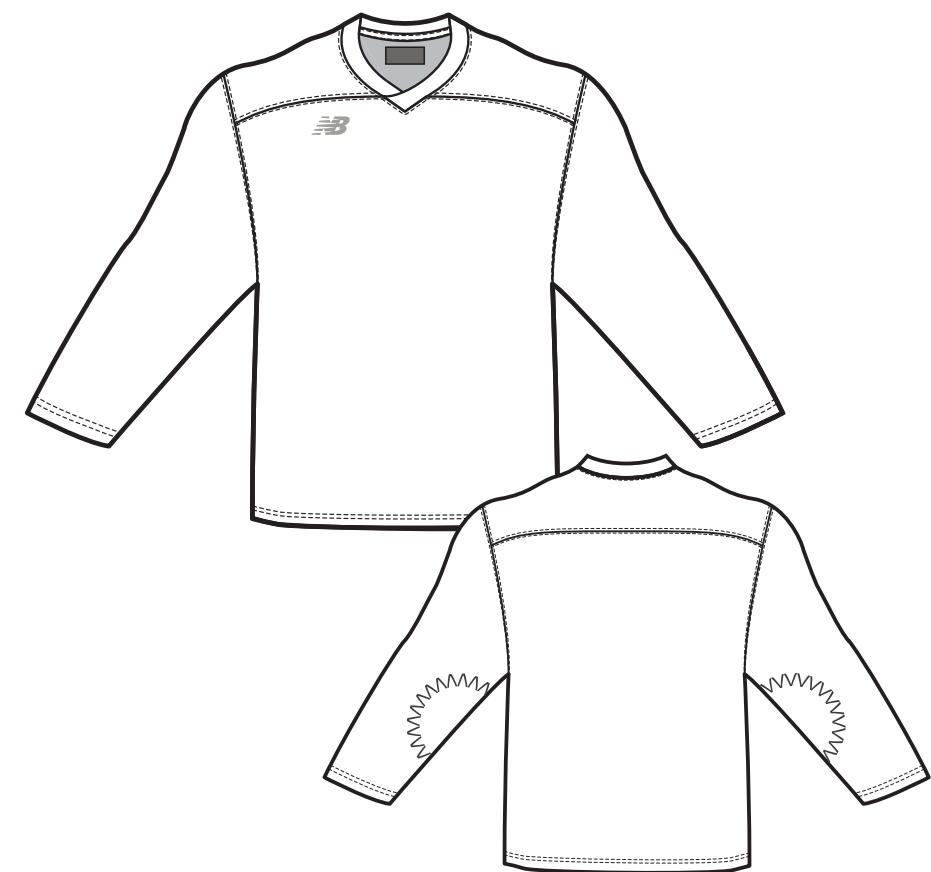


EMULATOR BOX JERSEY (GOALIE)

MEN: DMT101 (L - XL)
 YOUTH: DBT101 (L - XL)
 COLORS: MULTI

- Material: 100% Polyester
- Features include: Fully sublimated customization.
- Double Layer elbows.
- Double needle cover stitch.
- Double Layer Yoke.
- Fit perfected for Box Goalies.
- INTRO 7/1/19

ALSO IN TWILL
 MEN'S TWILL STYLE # DMT103
 BOY'S TWILL STYLE # DBT103

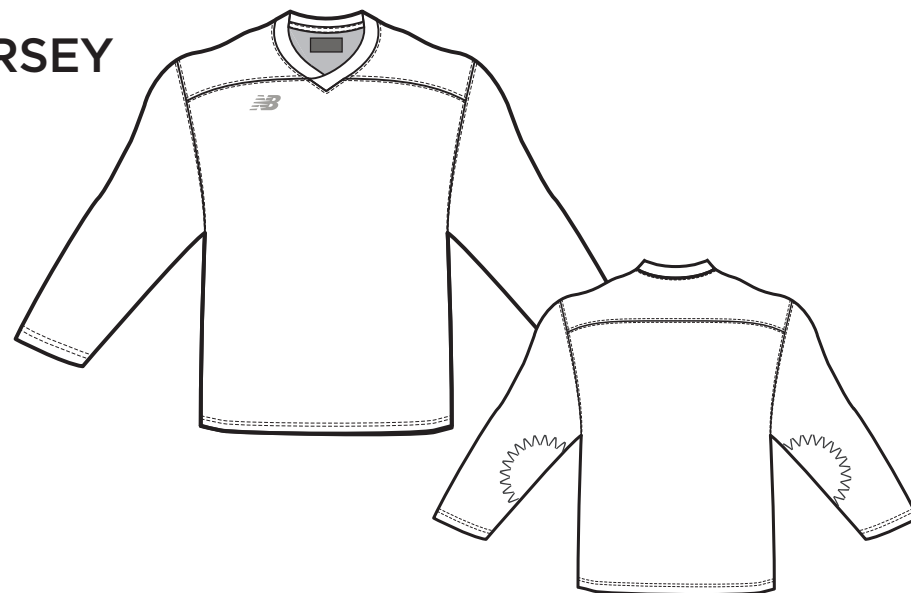


EMULATOR BOX JERSEY

MEN: DMT100 (S - 3X)
 YOUTH: DBT100 (XS - XL)
 COLORS: MULTI

- Material: 100% Polyester
- Features include: Fully sublimated customization.
- Double Layer elbows.
- Double needle cover stitch.
- Double Layer Yoke.
- INTRO 7/1/19

ALSO IN TWILL
 MEN'S TWILL STYLE # DMT102
 BOY'S TWILL STYLE # DBT102



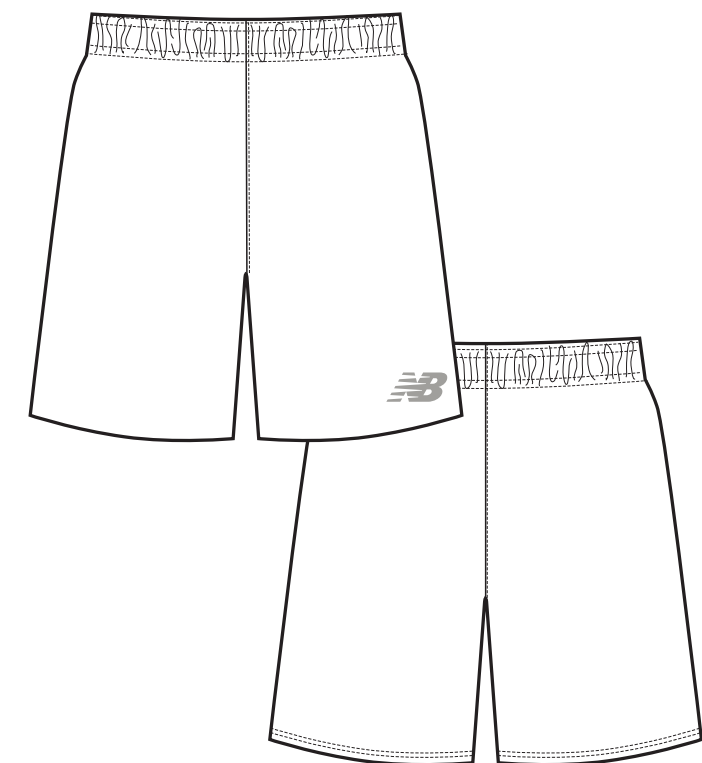
EMULATOR BOX SHORT 9"

MEN: DMS100 (S - 3XL)
 COLORS: MULTI

EMULATOR BOX SHORT 7"

MEN: DMS101 (S - 3XL)
 YOUTH: DBS101 (XS - XL)
 COLORS: MULTI

- Material: 100% Polyester
- Features include: Fully sublimated customization.
- Interior Drawcord.
- Encased Elastic.
- On seam Pockets.
- INTRO 7/1/19



» MEN'S DUAL SIZE UNIFORM SIZING



CHEST
Measure under the arms at the fullest point of the chest

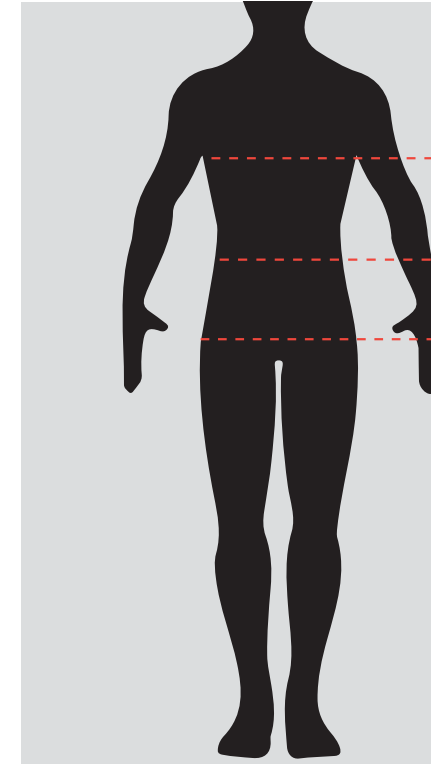
WAIST
Measure around your natural waist, narrowest part

SEAT
Measure around the fullest part of your hips while standing

	CHEST	WAIST	SEAT
S/M	35-41	29-34	34-40
L/XL	41-48	34-41	40-46
2X/3X	48-57	41-50	46-54

*If you fall between sizes, choose bigger size for looser fit or smaller size for slimmer fit.

» YOUTH DUAL SIZE UNIFORM SIZING



CHEST
Measure under the arms at the fullest point of the chest

WAIST
Measure around your natural waist, narrowest part

SEAT
Measure around the fullest part of your hips while standing

	CHEST	WAIST	SEAT
S/M	30-35	23-25	34-40
L/XL	35-40	25-28	40-44

*If you fall between sizes, choose bigger size for looser fit or smaller size for slimmer fit.

» MEN'S UNIFORM SIZING



CHEST
Measure under the arms at the fullest point of the chest

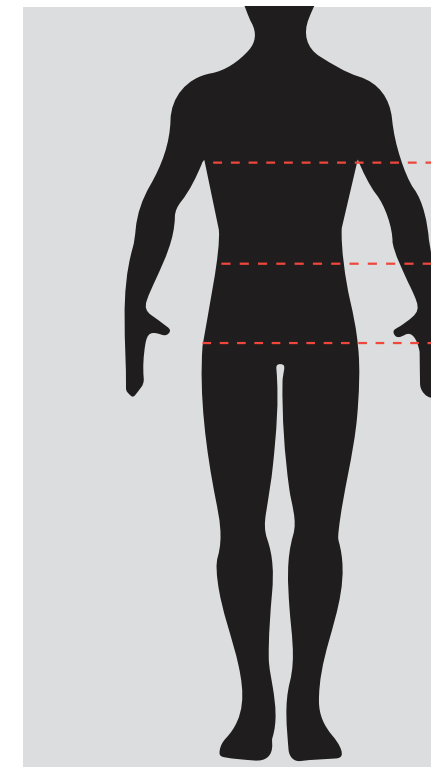
WAIST
Measure around your natural waist, narrowest part

SEAT
Measure around the fullest part of your hips while standing

	CHEST	WAIST	SEAT
S	35-38	29-31	34-37
M	38-41	31-34	37-40
L	41-44	34-37	40-43
XL	44-48	37-41	43-46
XXL	48-53	41-46	46-50
XXXL	53-57	46-50	50-54

*If you fall between sizes, choose bigger size for looser fit or smaller size for slimmer fit.

» YOUTH UNIFORM SIZING



CHEST
Measure under the arms at the fullest point of the chest

WAIST
Measure around your natural waist, narrowest part

SEAT
Measure around the fullest part of your hips while standing

	CHEST	WAIST	SEAT
XS	27-30	22-23	33-34
S	30-32	23-24	34-37
M	32-35	24-25	38-40
L	35-38	25-27	40-43
XL	39-40	27-28	43-44

*If you fall between sizes, choose bigger size for looser fit or smaller size for slimmer fit.



WOMENS
LACROSSE 2020



NEW

WOMEN'S BURNX2

CODES: WBURNX
COLORS: W, B, G (NEW)
SIZES: 5.5-11, 12 (B,D)
INTRO DATE: 9/14/19
GREY PACK AVAILABLE 12/1/19
\$60.50 / \$109.95

The Women's BurnX2 Mid/Low lacrosse cleat is built for speed. The fully knit upper features kinetic stitch only where needed for a snug, supportive fit that won't get in your way. Underfoot, the TPU plate provides the perfect combination of flexibility, stability and traction for supporting your top speeds.

UPPER

- Knit upper for lightweight and breathable performance
- Kinetic Stitch for targeted stability only where needed
- Full collar construction for lock down fit
- Protective film on the toe for durability only where needed

PLATE

- Lightweight and flexible TPU outsole
- Underfoot spikes mimic track spike placement for straight ahead speed

WBURNXM (MID)



WBURNXMH

WBURNXL (LOW)



WBURNXLH



WBURNXMP

Grey Available 12/1/19



WBURNXLS



WBURNXMK

Black available in MID only



BSN SPORTS

NEW

WOMEN'S RUSHv2

CODES: WRUSH
 COLORS: W, B
 SIZES: 5-11, 12 (B,D)
 AVAILABLE: 12/1/19 (BLACK AND WHITE STYLES ONLY)
 \$38.50 / \$69.99

The New Balance women's lacrosse Rush v2 cleat is ideal for speed players seeking a refined silhouette and reliable support. A low/mid top collar and synthetic mesh upper delivers light, breathable support, while a redesigned plate helps stabilize your form during quick sprints.

UPPER

- Mid or Low collars that make it easy for you to choose your level of support
- Traditional tongue for easy entry and lock down fit
- Synthetic and mesh upper that delivers light, breathable support

PLATE

- New plate that provides upgraded underfoot traction and motion control



WRUSHMW1

WRUSHLW1

FRESH FOAM HUPO'O

SLIDE
 \$25.00 / \$49.99

Wrap your foot in a cloud of comfort with the Fresh Foam Hupo'o. This unique sports slide features a full length Fresh Foam midsole carrier for incredible comfort and strategically placed rubber pods for enhanced traction and durability. The contoured foot bed is extremely plush for immediate comfort. The upper features a molded foam strap that will cause one to ponder whether this sandal is more comfortable under the foot or on top of the foot.



New 1/1/20
SWFTEKU1 Black/White
 Futures 3/31/20
 B 5-12*

New 1/1/20
SWFTEKL1 Light Cyclone/Steel/
 Munsell White/Team Carolina
 Futures 12/28/20
 B 5-12*

200

SLIDE
 \$15.00 / \$29.99

The New Balance 200 slide will be your new must-have locker room companion. With a convenient slip-on design and a supple top bed foam for underfoot cushioning, you can recover in plush comfort after your next training session.



New 1/1/20
SWF200PB Plum/Black/
 Munsell White
 Futures 9/28/20
 B/D 5-13*



New 1/1/20
SWF200RP Toro Red/Plum
 Futures 9/28/20
 B/D 5-13*



New 1/1/20
SWF200LS Lemon Slush/
 Munsell
 White/Bali Blue
 Futures 9/28/20
 B/D 5-13*



New 1/1/20
SWF200WF Floral/White
 Futures 12/31/20
 B/D 5-13*



10/1/19
SWF200P1 Black/Pink
 Futures 9/30/21
 B/D 5-13*



10/1/19
SWF200W1 White/White
 Futures 9/30/21
 B/D 5-13*



10/1/19
SWF200K1 Black/Black
 Futures 9/30/21
 B/D 5-13*



10/1/19
SWF200B1 Black/White
 Futures 9/30/21
 B/D 5-13*

200 ADJUSTABLE

SLIDE
 \$17.50 / \$34.99

The New Balance 200 adjustable sandal will be your new must-have locker room companion. With a convenient slip-on design and a supple top bed foam for underfoot cushioning, you can recover in plush comfort after your next training session. Plus, this sandal has an adjustable hook and loop strap to achieve a comfortable fit.



10/1/19
SWA200W1 White/Black
 Futures 9/28/21
 B/D 5-13*



10/1/19
SWA200B1 Black/White
 Futures 9/28/21
 B/D 5-13*

890v7

ROAD RUNNING
 \$66.00 / \$119.95

You'll find yourself reaching for the New Balance 890v7 over and over again. This go-to trainer for serious runners features responsive technology and a gusseted tongue to help offer a snug midfoot fit. Its minimal design makes it the perfect for both daily trainings or trips to the gym.



4/1/19
W890BG7 Crystal Sage/Dark
 Agave/Bleached Lime Glo
 Futures 7/28/19
 B/D 5-11, 12*



4/1/19
W890GG7 Dark Neptune/
 Eclipse/Neon Emerald
 Seasonal Replenishment
 1/28/20
 B/D 5-11, 12*



4/1/19
W890W07 White/Guava
 Glo/
 Bleached Lime Glo
 Seasonal Replenishment
 1/28/20
 B/D 5-11, 12*



870v5

ROAD RUNNING
\$60.50 / \$109.95

The 870v5 women's running shoe from New Balance provides a lightweight but responsive ride with just a dash of stability. Ground contact REVlite cushioning with a stabilizing medial post, plus a slightly structured upper gives you the best of lightweight comfort and support.



New 7/1/19
W870BW5 Black/White/Oxygen Pink
Seasonal Replenishment 12/28/19
B/D 5-11, 12*



New 7/1/19
W870RP5 Oxygen Pink/Iodine Violet
Replenishment 4/28/20
B/D 5-11, 12



New 7/1/19
W870WB5 White/Vivid Cobalt/Oxygen Pink
Seasonal Replenishment 12/28/19
B/D 5-11, 12*

FUELCELL PROPEL

ROAD RUNNING
\$60.50 / \$109.95

Are you ready for faster runs? The FuelCell Propel from New Balance is built for a speedy ride, our high rebound FuelCell formulation is new and improved, delivering a unique underfoot liveliness and springy responsiveness needed to help you beat your personal best. Designed with a comfortable trace fiber upper for zonal function support and a lightweight solid rubber and NDurance outsole, this fast and fashionable runner is fit for wherever your route takes you.



New 8/1/19
WFPCRLF1 Summer Fog/Black
Replenishment 11/28/19
B/D 5-11, 12*



New 8/1/19
WFPCRLB1 Lead/Black
Futures 11/28/19
B/D 5-11, 12*

FRESH FOAM ROAV KNIT

ROAD RUNNING
\$44.00 / \$79.95

The Fresh Foam Roav Knit from New Balance has an Ultra Heel construction that adapts to your foot, providing a seamless feel and a modern aesthetic. This women's sneaker features Fresh Foam midsole delivers a comfortable and unmatched ride. Plus, a knit upper with suede overlays adds a touch of style.



New 7/1/19
WROAVKG Gunmetal/Light Aluminum
Replenishment 3/31/20
B/D 5-11, 12*



New 7/1/19
WROAVKB Black/Sea Salt
Replenishment 3/31/20
B/D 5-11, 12*

MINIMUS PREVAIL

CONDITIONING
\$60.50 / \$109.95

The Minimus Prevail cross training shoe for women is designed to help bring strength, style and stability to your workout. Its engineered knit upper is infused with TPU fibers that help offer support as you lift weights and train with underfoot support and a good ground feel. with underfoot support and a good ground feel.



New 7/1/19
WXMLPW1 White/Black/Vivid Cobalt
Futures 11/28/19
B/D 5-11, 12*



New 7/1/19
WXMLPB1 Black/Magnet/Champagne Metallic
Futures 4/28/20
B/D 5-11, 12*

WOMEN'S SS TECH TEE

CODES: TMWT500
COLORS: WT, DH, TBK, TNV, TRY, TRE
SIZES: XS - 2XL

Featuring a lightweight and comfortable sweat-wicking fabric with a soft feel, our Tech Tee delivers an athletic fit to help give you superior movement and breathability. Also has an antimicrobial treatment to resist odors so you can wear with confidence. Our Long Sleeve Tech Tee is the perfect all-purpose layer, ready for activity or just cold-chillin'.

- Material: 100% Polyester
- Athletic Fit
- NB heatseal logo at top of right shoulder
- Imported



WT DH TBK TNV TRY TRE

WOMEN'S LS TECH TEE

CODES: TMWT501
COLORS: WT, DH, TBK, TNV
SIZES: XS - 2XL

Featuring a lightweight and comfortable sweat-wicking fabric with a soft feel, our Tech Tee delivers an athletic fit to help give you maximum movement and breathability. Also has an antimicrobial treatment to resist odors so you can wear with confidence. Our Short Sleeve Tech Tee is the perfect all-purpose layer, ready for activity or just cold-chillin'.

- Material: 100% Polyester
- Athletic Fit
- NB heatseal logo at top of right shoulder
- Imported



WT DH TBK TNV

HEATHERTECH T

CODES: WT73123
 COLORS: BKH, AG, SST
 SIZES: XS - XL

Bridge the gap between function and style with the men's Short Sleeve Heathertech T. Smooth, moisture-wicking fabric with superior softness has the performance features you need and a modern look. Plus, a subtle shark reflective logo helps up your visibility no matter your route.

- Material: 60% Cotton, 40% Polyester
- Athletic fit



BKH AG SST

WOMEN'S LIGHTWEIGHT SOLID HALF ZIP

CODES: TMWT710
 COLORS: TBK, MHG, TNV
 SIZES: XS - 2XL

Stretchy brushed-back fleece and an athletic cut help you have move freely in all conditions. This women's half zip also features a front pouch pocket.



TBK MHG TNV

WOMEN'S PERF TECH POLO

CODES: TMWT714
 COLORS: WT, LG, TBK, TNV, TRE, TRY
 SIZES: XS - 2XL

The Performance Tech Polo is the perfect shirt for warm-weather activities. Flatback mesh inserts allow for air circulation to help keep you cool while outdoors. Plus, details like the ribbed collar, textured pindot fabric and the slight droptail hem bring a tailored touch to this essential.

- Material: 100% Polyester
- Flatback mesh inserts
- NB wordmark at hem
- Reflective logo at wearer's right chest
- Ribbed collar
- Slight droptail hem
- Textured pindot fabric
- Imported



WT LG TBK TNV TRY TRE

COREFLEECE HOODIE

CODES: WT73151
 COLORS: BK, SSH
 SIZES: S - XL

The New Balance CoreFleece FZ Hoodie sports a soft polyester fleece build. It features an athletic fit, and a hood to keep you comfortable.

- Material: 100% Polyester



BK SST

WOMEN'S TECH SHORT

CODES: TMWS555
 COLORS: TBK, TRY, TNV, TRE, DH
 SIZES: XXS - 2XL

The Tech Short is the perfect all-purpose active training short. Made from 90% poly, 10% spandex, our short is lightweight and comfortable with breathable, sweat-wicking fabric. Also features side seam pockets, which come in handy for holding essentials like keys or your phone.

- Material: 90% Polyester, 10% Spandex



ACCELERATE 5" SHORT

CODES: WS81294
 COLORS: BK, PGM
 SIZES: XS - 2XL

Featuring streamlined performance technology with modern style to spare, the women's Accelerate 5" Short is our favorite for running or training. The sleek shape is made from lightweight moisture-wicking woven material and features a boxer waistband for a secure fit. Plus, reflective branding on the front adds stylish visibility, and the petal hem adds feminine flair.



COREFLEECE JOGGER

CODES: WP73156
 COLORS: BK, PGM
 SIZES: S - XL

Your game might not need to change, but your goto gear could use an upgrade. Our NB Corefleece Jogger offers superior stretch and comfort functionality whether you're warming up or chilling out. It's cut from soft moisture-wicking fabric with a drawstring closure for a secure fit. Complete with reflective logo details and cuffed hems, this go-to pant has it all.

- Material: 100% Polyester



PERFORMANCE TECH TIGHT

CODES: TMWP701
 COLORS: BK, WT
 SIZES: XS - 2XL

Essential to every athlete is our Challenge Tight, a men's fitted pant with smart NB Dry and NB Fresh technology to keep you feeling dry, cool and comfortable. Mesh paneling ventilates hot zones while flatlock seams helps reduce chafing so you can work as hard as you want with confidence.

- Material: 88% Polyester 12% Spandex



ACCELERATE TANK

CODES: WT91138
 COLORS: BK, PGM, WT
 SIZES: XS - 2XL

Simplicity joins with style in the Accelerate Tank for women. The athletic tunic-length fit is feminine without the frills. this quintessential sweat-wicking top is designed to help keep you ventilated and motivated.

- Material: 100% Polyester



COMPRESSION SHORT

CODES: TMWS609
 COLORS: BK, WT
 SIZES: XXS - 2XL

Simplicity joins with style in the Accelerate Tank for women. The athletic tunic-length fit is feminine without the frills. this quintessential sweat-wicking top is designed to help keep you ventilated and motivated.

- Material: 100% Polyester



CLUB REVERSIBLE JERSEY

WOMENS: DWT003 (XS/S, M/L, XL/2X)
 GIRLS: DGT003 (S/M, L/XL)
 COLORS: MULTI

- Material: 100% Polyester
- Features include: Fully Sublimated customization.
- Shoulder seams rolled to back to eliminate distraction.
- Dual Ply Construction.
- Fully reversible.



EMERY JERSEY

WOMENS: DWT001 (XS - 2X)
 GIRLS: DGT001 (XS - XL)
 COLORS: MULTI

- Material: 100% Polyester
- Features include: Fully Sublimated customization.
- Racerback Cut.
- Forward side seams.
- Pindot material

ALSO IN TWILL
 WOMEN'S TWILL STYLE #DWT005
 GIRL'S TWILL STYLE #DGT005



EMERY KILT

WOMENS: DWK001 (XS - 2X)
 GIRLS: DGK001 (XS - XL)
 COLORS: MULTI

- Material: 100% Polyester
- Features include: Fully Sublimated customization.
- Interior Drawstring.
- Encasted Elastic.



CLUB SHORT

WOMENS: DWS004 (XS - 2X)
 WOMENS 5" INSEAM
 GIRLS: DGS004 (XS - XL)
 GIRLS 4" INSEAM
 COLORS: MULTI

- Material: 100% Polyester
- Features include: Fully Sublimated customization.
- Interior Drawstring.
- On seam Pockets.
- Encasted Elastic.



EMERY SHORT

WOMENS: DWS001 (XS - 2X)
 GIRLS: DGS001 (XS - XL)
 COLORS: MULTI

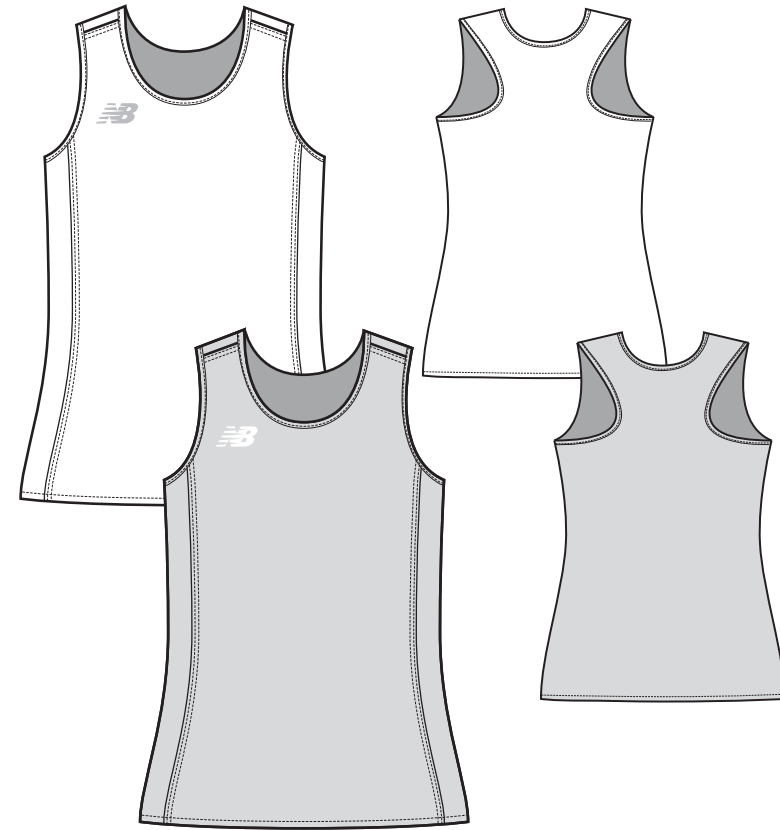
- Material: 100% Polyester
- Features include: Fully Sublimated customization.
- Interior Drawstring.
- Encasted Elastic.
- INTRO 7/1/19



SINGLE PLY JERSEY

WOMENS: DWT002 (XS/S, M/L, XL/2X)
 GIRLS: DGT002 (S/M, L/XL)
 COLORS: MULTI

- Material: 100% Polyester
- Features include: Fully Sublimated customization.
- Shoulder seams rolled to back to eliminate distraction.
- Single Ply Construction.
- Fully reversible.
- INTRO 4/1/19



» WOMEN'S DUAL SIZE UNIFORM SIZING

CHEST
Measure under the arms at the fullest point of the bust

WAIST
Measure around your natural waist, narrowest point

HIP
Measure around the fullest part of your hips while standing

	CHEST	WAIST	HIP
XS/S	30-35	24-28	33-38
M/L	35-40	28-34	38-43
XL/2X	40-47	34-42	43-50

*If you fall between sizes, choose bigger size for looser fit or smaller size for slimmer fit.

» WOMEN'S UNIFORM SIZING

CHEST
Measure under the arms at the fullest point of the bust

WAIST
Measure around your natural waist, narrowest point

HIP
Measure around the fullest part of your hips while standing

	CHEST	WAIST	HIP
XS	30-32	24-26	33-35
S	32-35	26-28	35-38
M	35-37	28-31	38-40
L	37-40	31-34	40-43
XL	40-44	34-38	43-47
XXL	44-47	38-42	47-50

*If you fall between sizes, choose bigger size for looser fit or smaller size for slimmer fit.

NEW BALANCE ATHLETICS, INC.
BOSTON LANDING
100 GUEST STREET
BOSTON, MA 02135

BSNSalesSupport@NewBalance.com

